

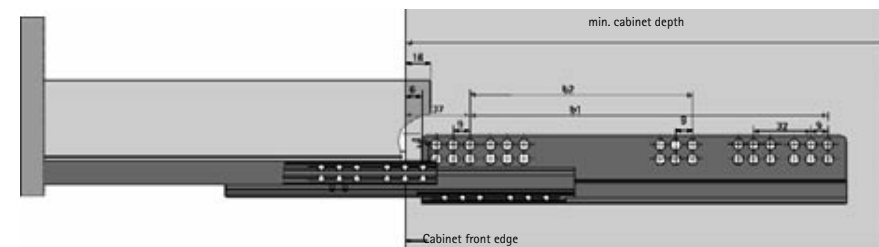
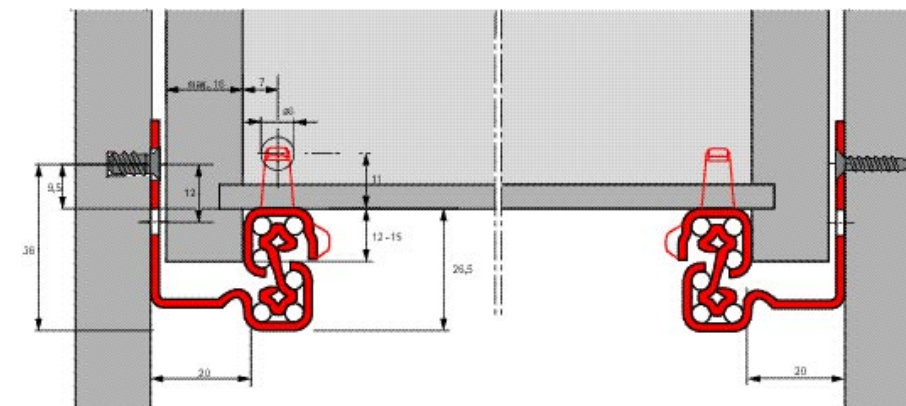
Quadro V6 full extension runner for wooden drawers

slide-on assembly
and STOP-CONTROL
load capacity up to 30 kg



- Load capacity length-dependent up to 30 kg total weight (drawer plus contents)
- Perfect vertical and lateral stability. Optimal runner action thanks to precision steel balls running in tough, precision-manufactured steel tracks.
- Maintenance-free through self-cleaning ball tracks.
- The integrated detent prevents accidental opening.
- **Slide-on assembly** – simply position the drawer with its premounted catch on the runner and push in fully. Done!
- Robust catch with integrated toolless height adjustment for perfect seating.
- **Flexibility through interchangeability** – swap between Quadro partial and full extension runners without changing the unit, drawer or front panel dimensions!

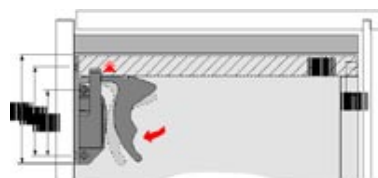
Item (load/length)	Order no. left	Order no. right	Drawer length mm	Min. cabinet depth mm	Hole spacing b1 mm	Hole spacing b2 mm
Quadro V6 15/280	104 247 8	104 248 0	280	290	160	-
Quadro V6 15/300	104 278 2	104 278 3	300	310	192	-
Quadro V6 15/320	104 265 8	104 265 9	320	330	192	-
Quadro V6 15/350	104 407 8	104 408 0	350	360	192	-
Quadro V6 15/380	104 266 1	104 266 2	380	390	224	-
Quadro V6 30/400	104 416 3	104 416 4	400	410	224	-
Quadro V6 30/420	104 248 5	104 248 6	420	430	224	-
Quadro V6 30/450	104 425 4	104 425 5	450	460	256	-
Quadro V6 30/480	104 248 8	104 248 9	480	490	256	-
Quadro V6 30/500	103 944 9	103 945 0	500	510	288	224
Quadro V6 30/520	104 248 2	104 248 3	520	530	288	224
Quadro V6 30/550	104 426 1	104 426 2	550	560	288	224



The given dimensions assume a 1.5 mm gap between front panels. Allow for thicker front panel stops in the hole pattern.

Catch with integrated height adjustment

Item	Finish	Order no.
Catch left	black	106 749 4
Catch right	black	106 749 5

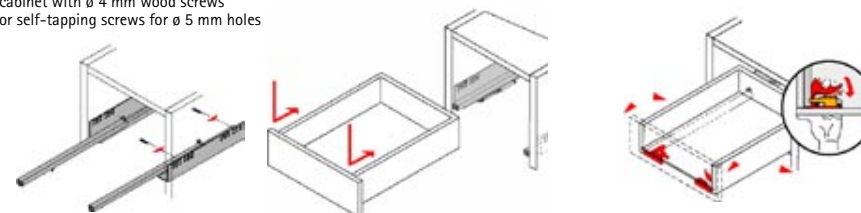


Operating note

Quadro assembly

Attach the Quadro runner to the cabinet with \varnothing 4 mm wood screws or self-tapping screws for \varnothing 5 mm holes

Disassembly



The number of fixing screws depends on the total weight, the type of screws and the type of material used for the cabinet.