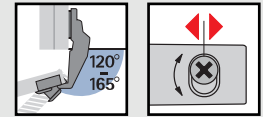
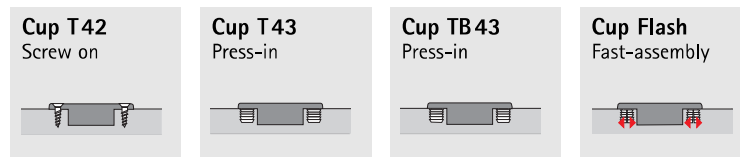


Fast-assembly concealed hinge Intermat 9956 Opening angle 165° - 120°



- Concealed hinge for snap-on attachment
- Door thickness from 16 mm
- Cup diameter 35 mm
- With self-closing feature
- Ideal reveals (hairline reveal)
- No door protrusion, i.e. unobstructed interior for pull-outs
- Opening angle can be reduced to 120° by infinitely variable amounts (for adjusting screw, see page below)
- Integrated overlay adjustment + 1,0 mm/- 2,5 mm
- Integrated cam depth adjustment + 1,7 mm/- 2,3 mm
- Height adjustment at mounting plate \pm 2 mm
- Hinge cup/arm: nickel-plated steel

Cup versions

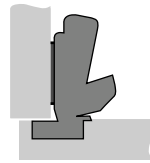


Hinge versions

Mounting options Article/Order no.

Cranking 0 mm

Overlay door



9956-T42
0 072 947

9956-T43
0 072 948

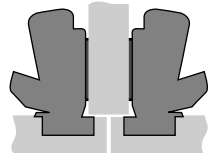
9956-TB43
0 072 949

9956-Flash
0 072 124

PU
1/50

Cranking 9,5 mm

Overlay door



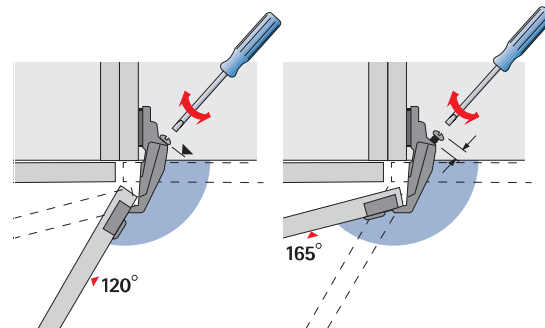
9956-T42
0 072 961

9956-T43
0 072 962

9956-TB43
0 072 963

9956-Flash
0 072 964

PU
1/50



Opening angle 165° – the M5x14 mm adjusting screw can be used for reducing the opening angle to 120° by infinitely variable amounts.

Hinge-cup fixing screw
 \varnothing 3,5 x 13 mm for Cup T42
• Nickel-plated steel



Order no. PU
0 048 296 200

Adjustment screw M5 x14 mm
• Nickel-plated steel



Order no. PU
0 079 791 50



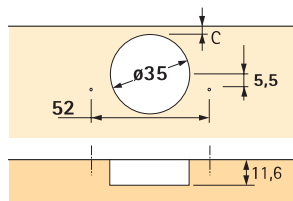
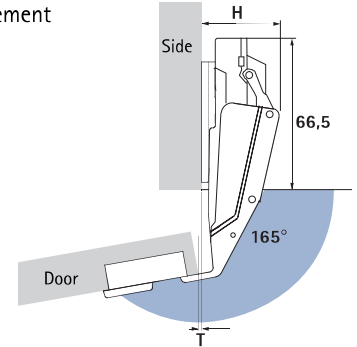
**Hett
CAD**

Fast-assembly concealed hinge Intermat 9956 Opening angle 165° - 120°

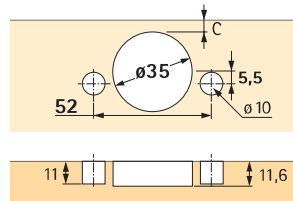
Cup distance C mm	Door thickness mm			
	16	17	18	19
Minimum reveal per door				
3	0	0	0	0
4	0	0	0	0
4,5	0	0	0	0
5	0	0	0	0
6	0	0	0	0

The minimum reveal for doors up to 19 mm thick is 0 mm. A trial assembly is recommended for doors thicker than 19 mm (max. door thickness 25 mm).

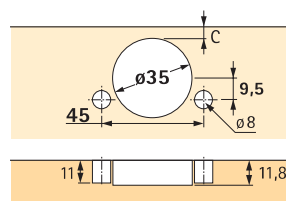
No door protrusion T for 0 mm distance and 3 mm cup distance, unrestricted runner movement



T42 hole dimensions

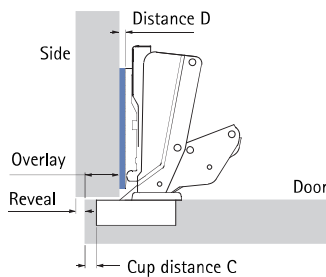


T43 hole dimensions/Flash



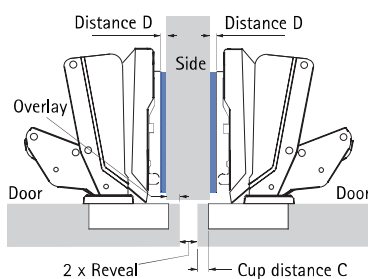
TB43 hole dimensions

Cranking mm	H mm	T mm
0,0	58,5	-0,8
9,5	68,0	8,7



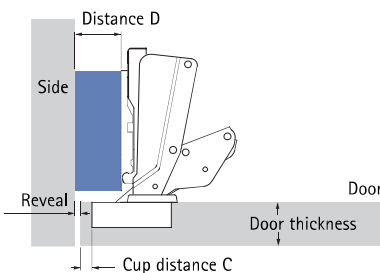
Cup distance C mm	Overlay mm									
	10	11	12	13	14	15	16	17	18	
Distance D mm										
3	5,5	4,5	3,5	2,5	1,5	0,5				
4	6,5	5,5	4,5	3,5	2,5	1,5	0,5			
4,5	7,0	6,0	5,0	4,0	3,0	2,0	1,0	0,0		
5	7,5	6,5	5,5	4,5	3,5	2,5	1,5	0,5		
6	8,5	7,5	6,5	5,5	4,5	3,5	2,5	1,5	0,5	

Overlay adjustment + 1,0 mm / - 2,5 mm



Cup distance C mm	Overlay mm								
	0	1	2	3	4	5	6	7	8
Distance D mm									
3	6,0	5,0	4,0	3,0	2,0	1,0	0,0		
4	7,0	6,0	5,0	4,0	3,0	2,0	1,0	0,0	
4,5	7,5	6,5	5,5	4,5	3,5	2,5	1,5	0,5	
5	8,0	7,0	6,0	5,0	4,0	3,0	2,0	1,0	0,0
6	9,0	8,0	7,0	6,0	5,0	4,0	3,0	2,0	1,0

Overlay adjustment + 1,0 mm / - 2,5 mm



Cup distance C mm	Reveal 1 mm	
	Distance D mm	Hole-line position for inset mounting = 37 mm + Door thickness + 1 mm
3	8,0	
4	9,0	
4,5	9,5	
5	10,0	
6	11,0	

Reveal adjustment + 2,5 mm / - 1,0 mm

- 🔊 Silent System, see pages 3.1.104 - 3.1.118
- 🔊 Push-To-Open, see pages 3.1.128 - 3.1.129
- 🔊 Mounting plates, see pages 3.1.88 - 3.1.91
- 🔊 Technical information, see pages 3.1.10 - 3.1.11
- 🔊 Mounting configurations for various face angles, see pages 3.1.93 - 3.1.103